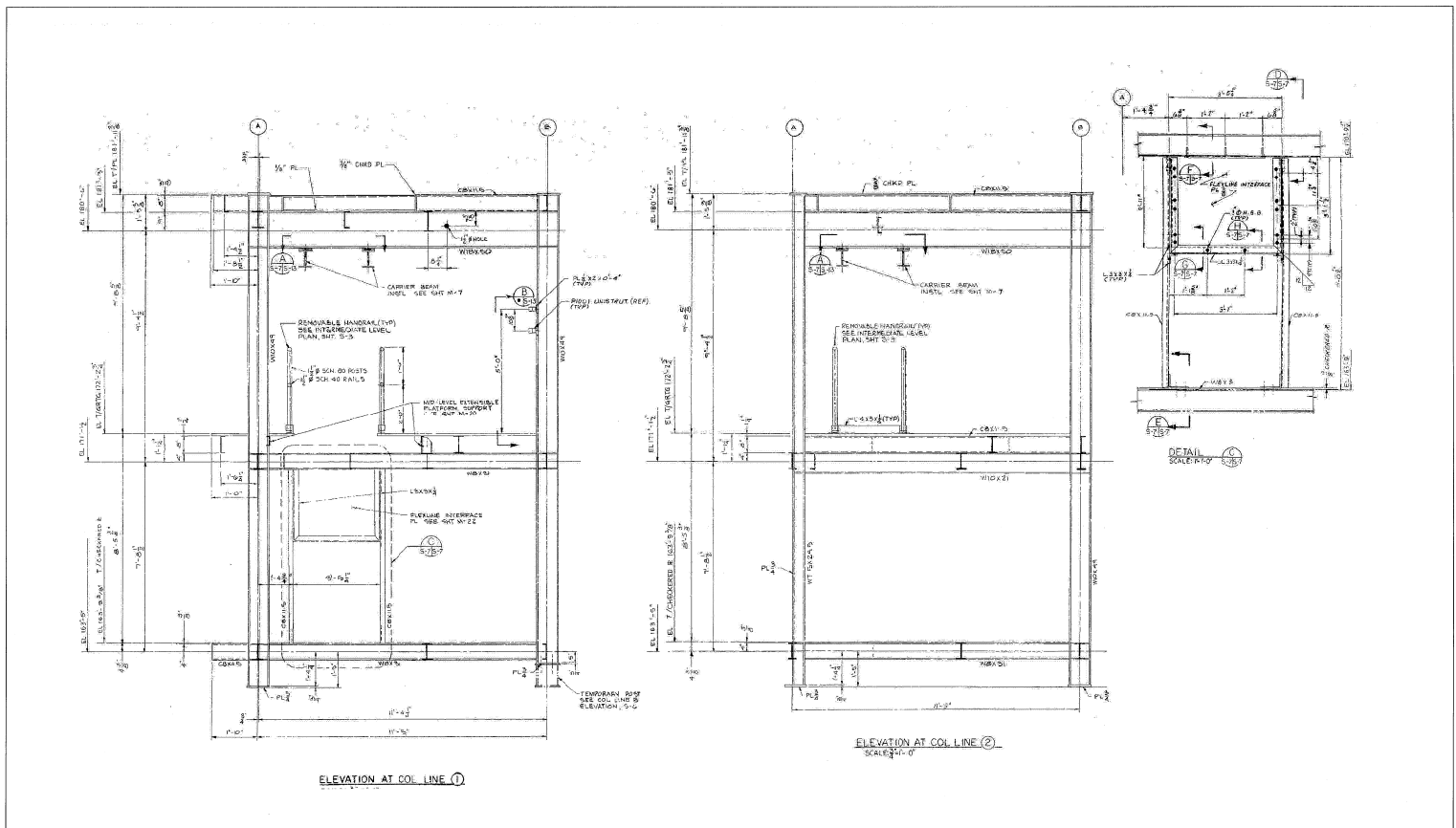
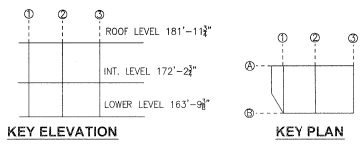


NOTICE: When Government drawings, specifications, or other data are used for any purpose other than in connection with a specific project authorized by the Government, the United States Government thereby incurs no responsibility or obligation whatsoever, and the fact that the Government may have furnished, furnished, or in any way supplied the said drawings, specifications or other data is not to be regarded by implication or otherwise as in any manner favoring the holder or any other person or corporation, or conveying any rights or privilege to reproduce, use, or in any way patented invention that may in any way be related thereto.



OMBUU ELEVATION LINES 1 AND 2

NTS - SOURCE FILE 79K05836 SHEET 57



THIS SPACE RESERVED

SYM	ZONE	DESCRIPTION	DATE	APPROVED
REVISIONS				
THIS DRAWING CREATED IN AUTOCAD 2007 FILE FORMAT AND WILL BE REVISED ONLY ON AN AUTOCAD SYSTEM. FILE: 14005006-572.DWG				
<small>730 NE WALDO ROAD, GAINESVILLE, FLORIDA 32641 / (352) 377-5831 3915 WASHINGTON AVE, SUITE 210, TITUSVILLE, FLORIDA 32781 / (321) 269-2950</small>				
SIGNATURES	DATE	NATIONAL AERONAUTICS AND SPACE ADMINISTRATION		
DRAWN S. HAFERKAMP	06/24/09	JOHN F. KENNEDY SPACE CENTER, NASA KENNEDY SPACE CENTER, FLORIDA		
CHECKED S. BHIDE	06/24/09	LAUNCH COMPLEX 39B, DEMOLITION OF FSS/RSS AT LAUNCH COMPLEX 39B, DEMOLITION PACKAGE		
DESIGNED N. PONTILLO	06/24/09	OMBUU ELEVATION LINES 1 AND 2		
SUBMITTED J. NP	6/24/09			
APPROVED	DATE	SIZE	DWG. NO.	REV
	6/24/09	F	222W2200001	

S72 TITLE 2 PROJ. NO. 98580 SHEET 87